

Running Times

The operating times of this torch may vary depending on the working conditions and the amount of charge in the battery at the time of use. The approximate running times for the four functions of this torch when fully charged are as follows:

Halogen Spotlight	55 Minutes
8 LED Floodlight	15 Hours
21 LED Worklight	10 Hours
7 LED Red Safety Light	20 Hours

To achieve the best performance of your '**Lightning Bolt**' always switch the torch off when the battery power begins to run low, and recharged immediately.

Care and Maintenance

Storage

Store the '**Lightning Bolt**' multi function torch and charging adaptors in a clean and dry area. Be sure to keep the charging adapters supplied with this product stored separately from similar items as only charging adapters included with this torch are compatible. Using a non-compatible charger could cause damage to the torch or personal injury.

The torch may also be stored in a vehicle for use in roadside emergencies. If kept in a vehicle, it is recommended that battery be re-charged every 30-45 days to ensure maximum performance in an emergency. To prevent the torch and any of the accessories being damaged, please ensure that it is properly secure and in a safe place inside the vehicle.

Bulb Replacement

To replace the Halogen spotlight bulb, first check that the main switch is OFF. Pull off the rubber ring front cover, then remove the two retaining screw on the black plastic lens holder. Carefully remove lens holder along with the glass lens. Lift out the reflector and disconnect the white lead from the bulb from the Red lead connecting it to the battery. Press together the bulb retaining spring arms to release the bulb and remove. Fit the replacement bulb and clip in to place. Always use a tissue or clean cloth when handling a new bulb to avoid contamination that may cause the premature failure of the bulb. Reconnect the white bulb lead and reassembly the torch.

Replacement Bulb

Part No: L/H BOLT B

2 x Halogen 4V Bulb, 15 Watts

Cleaning

All exterior surfaces of the '**Lightning Bolt**' can be wiped clean with a soft cloth dampened with a soap and water solution. Do not immerse or submerge any part of torch in water or any other solvent. Never use solvents or cleaning agents containing petroleum (petrol, kerosene, oil), paint thinner, turpentine, alcohol, or ammonia. Harsh materials like these can damage surfaces.

Maintenance

All repairs other than replacement of the combination spotlight bulb should only be carried out by qualified service personnel. Do not open exterior casing of the spotlight, as there are no user serviceable parts inside. Opening or visible attempts to open or repair a combination spotlight may void any guarantee and/or cause damage to the product or personal injury. LED bulbs will never wear out under normal conditions and do not need to be replaced. Failure to recharge the spotlight battery every three months may permanently damage or reduce the performance of the spotlight.



Never attempt to open the battery pack, under abusive conditions liquid may be ejected from the battery, if accidental contact occurs flush the effected area with water. If the liquid comes into contact with the eyes flush with water and seek medical help. Liquid ejected from batteries may cause irritation or burns.



Ni-MH



This product contains an internal Lead Acid battery pack formulated from environmentally sensitive materials. This product must be disposed of properly with due care for the environment. Please return this product to your local dealer or to your local recycling station where batteries will be recycled or disposed of properly.



Never attempt to incinerate batteries as they may leak or explode.

One-Year Home Use Limited Guarantee

Lighthouse guarantees this product to the original purchaser for a period of ONE YEAR against any defects in material or workmanship but shall not cover damage caused by misuse, abuse, alteration, or accident. This product is intended for home use only and the guarantee will not cover products used for commercial purposes.

Lighthouse

Lightning Bolt

Rechargeable Multi Function Torch with Swivel Action Head

Product code: L/H BOLT

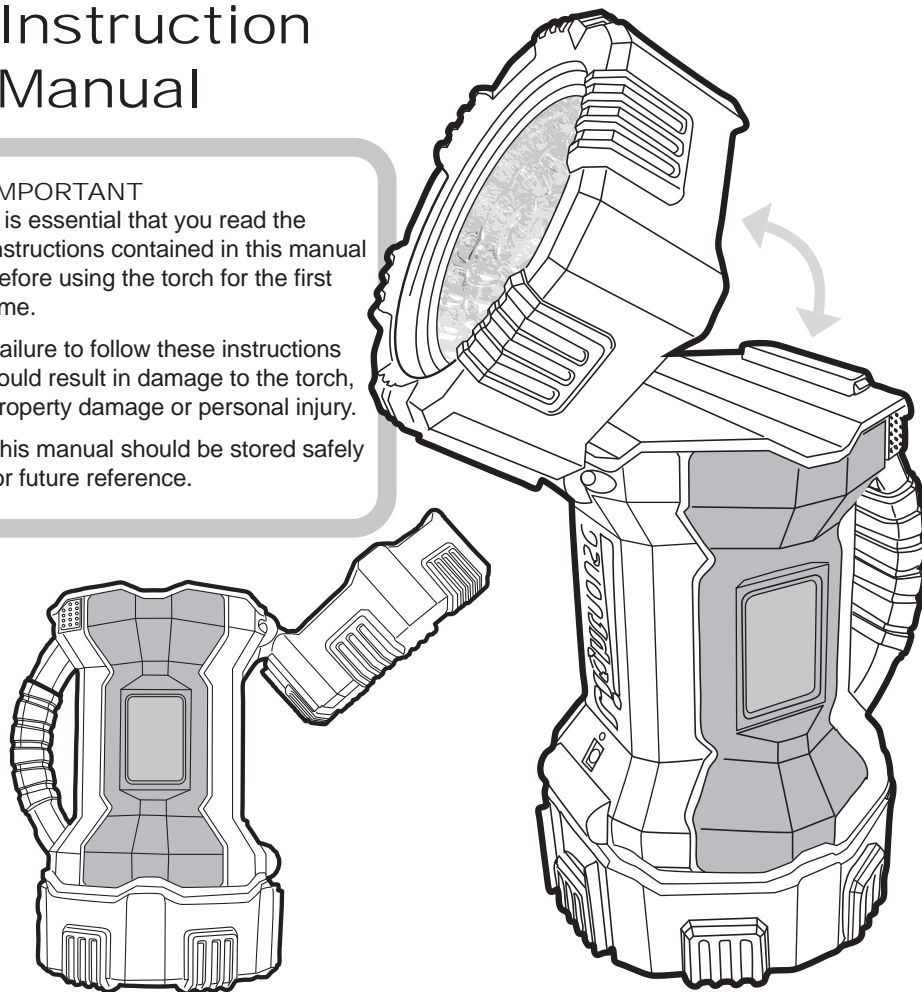
Instruction Manual

IMPORTANT

It is essential that you read the instructions contained in this manual before using the torch for the first time.

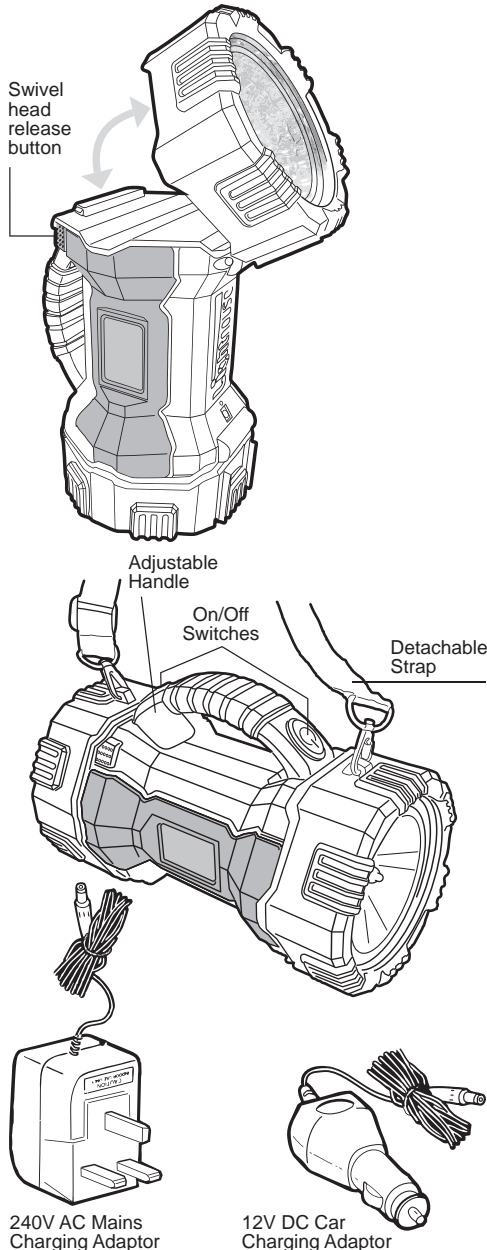
Failure to follow these instructions could result in damage to the torch, property damage or personal injury.

This manual should be stored safely for future reference.



The Lighthouse Multi Function Rechargeable Torch

Your new cordless, LIGHTHOUSE rechargeable multi function torch is perfect for use in and around the home and garage, providing a safe and portable source of light for use just where and when you need it. Great for use during power failures, while camping, fishing or working on the car and many other uses including roadside emergencies.



The 'Lightning Bolt' has four light outputs and functions.

SPOTLIGHT-FLOODLIGHT MODE:

Press the switch on the handle once to turn the spotlight on. This function uses the 15W halogen quartz high power beam. Depress again to turn the spotlight off and the floodlight on. This function uses the 8 LED Floodlight function. Depress again to turn the torch off.

SWIVEL ACTION HEAD FUNCTION

The torch comes with a swivel action head on one end. Press the two release buttons on either side of the head near the on/off button. The head can then be angled to suit your needs.

WORKLIGHT-SAFETY LIGHT MODE:

Press the switch on the otherside of the handle once to turn the worklight on. This function uses the 21 LED super bright beam. Depress again to turn the worklight off and the safety light on. This function uses the 7 Red flashing LED safety light. Depress again to turn the torch off. The swivel action head works on these two functions only.

Additional Features

The torch has an adjustable handle and can be fitted with the shoulder nylon detachable strap (supplied).

Torch Specifications:

Battery Pack: 4V/3Ah Internal Sealed Lead Acid Rechargeable Battery

Bulb Type: 1x 4V/15W Halogen Bulb
29 x White LED (Light-Emitting Diode)
7 x Red LED (Flashing)

LED Bulb Life: 100,000 Hours

Charger Specifications:

Model No: YH-BS350600300D

Voltage: 230~240V AC 50Hz

Secondary: 6V DC 300mA

Charging the LIGHTHOUSE Torch

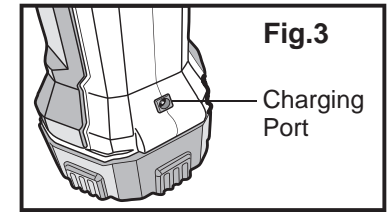
The 'Lightning Bolt' must be fully charged before being used for the first time. This will ensure that the battery gives its best performance now and on future re-charging cycles. The AC and DC charging adapters are for re-charging the battery only. They cannot be used to directly power the torch. Always ensure the torch is switched off whilst charging.

Using the AC Charging Adapter

- 1) Plug the adapters jack plug into the recharge socket (Fig 3).
- 2) Plug the adapter into a 240V socket and switch the socket on (if applicable).
- 3) The charging indicator lamp will glow RED while charging is in progress.
- 4) The battery will be fully charged after approximately 12 hours, Disconnect the jack plug from the torch, remove the adapter from the wall socket or switch off.

Safety Precautions

- Use 240v AC charging adapter indoors in a dry location only. Exposure to damp or wet conditions could cause electrocution or damage to adapter.
- Do not use the charger in the vicinity of flammable liquids or materials.
- Do not use the charging adapter in combination with any extension cord, electrical generators, or step-up transformers.
- Always plug the adapter directly into a 240v outlet in a suitable location.
- Store in dry location and do not allow the charging adapter to come in contact with water, rain or snow. If the charging adapter comes into contact with water, place in a dry location at room temperature, on a soft absorbent towel and allow to dry thoroughly.
- Do not operate the unit until it is completely free of moisture.
- If the adaptor becomes submerged in water, discontinue use immediately and contact your local LIGHTHOUSE retailer for a replacement charger unit.
- Do not store charging adapter where temperatures may exceed 122°F (50°C).
- Use only the AC charging adapter supplied with the torch. Do not attempt to charge the torch with an adapter that is not compatible as this could result in a fire, damage to the torch or personal injury.



Using the DC Charging Adapter

- 1) Plug the adapters jack plug into the recharge socket (Fig 3).
- 2) Plug the adapter into the vehicles 12v DC cigarette lighter or accessory power socket.
- 3) The charging indicator lamp will glow RED while charging is in progress.
- 4) Disconnect the jack plug from the torch, and remove the DC adapter from the outlet socket.
- 5) The battery will be fully charged after approximately 12 hours, Disconnect the jack plug from the torch, remove the DC adapter from the outlet socket.

To prevent overheating do not charge for more than 15 hours.

Safety Precautions

- The DC charging adapter can be used in most vehicles by plugging into the 12v DC cigarette lighter or accessory power socket.
- Consult your vehicle owner's manual for further information on operating 12v DC accessories.
- Do not drive the vehicle while charging, as an unsecured torch may be a hazard during certain driving manoeuvres.
- Store in dry location and do not allow the charging adapter to come in contact with water, rain or snow.
- If the charging adapter comes into contact with water, place in a dry location at room temperature, on a soft absorbent towel and allow to dry thoroughly. Do not operate the unit until it is completely free of moisture.
- If the adaptor becomes submerged in water, discontinue use immediately and contact your local LIGHTHOUSE retailer for a replacement charging adapter.
- Do not store charging adapter where temperatures may exceed 122°F (50°C).
- Use only the DC charging adapter supplied with the torch. Do not attempt to charge the torch with an adapter that is not compatible as this could result in a fire, damage to the torch or personal injury.